

# *Creative Draperies, Inc.*



400 Delta Drive  
Nicholasville, KY 40356  
Phone 800-941-1132  
Fax 859-887-5687  
[www.creativedraperies.com](http://www.creativedraperies.com)  
[info@creativedraperies.com](mailto:info@creativedraperies.com)

## 2 Winter Tree



Throw Beds/Headboard

Black Gum



Maple



Red Ash



Wahut

3-Out Bed Blanket/Winter Tree Black Gum with Zephyr Gryx side borders  
Capped Dust Ruffle/Rafter Flint - Drapery/Rafter Flint  
Sheer/Evident Snow - Bolster Pillows/Rafter Onyx



Knife-Edged Bed Blanket/Tuttle Garnet lined with Judicial Oriental - Unlined Bed Blanket/Revue Straw  
 Corded Pillow Shams/Tuttle Garnet - Throw pillows/Verge Molasses & Pomegranate (bed) & Morrell Poppy (chair)

Garnet



Grass



Peppercorn



Citrus



Pacific

# 4 Impala



Drapery/Impala Chocolate Mint ~ Self-lined Box Quilted Bed Scarf with capped corners/Rewill Quarry Rectangle Throw Pillows/Impala Chocolate Mint & Iron Leaf

Chocolate Mint



Pepper



Blue Haze



Aztec



Cherry Kiss



Bed Blanket with ruffled hem/Leafage Taupe lined with Linear Cloud  
 Capped Dust Ruffle/Natick Fudge - Pillow Case-Shams/Natick Fudge & Natick Turquoise  
 Rectangle Pillow/Natick Turquoise



# 6 Whoosh



Capped Bedspread

Unlined Bed Blanket/Exquisite Barley with 12" border in Whoosh White Chocolate  
 4-Corner Pleat Dust Ruffle/Generation Stone - Side Panel Drapery/Whoosh White Chocolate  
 Drapery/Generation Stone - Sheer/Nanjing Lining  
 Throw Pillows/Whoosh White Chocolate, Generation Stone, Whitlock Parchment





Self-lined Duvet with light insert/Aesthetic Truffle – Drapery/Generation Chestnut with Generation Mocha border  
 Throw Pillows/Generation Mocha – Bolster Pillow/Velocity Chestnut

Truffle



Crystal Grey



Aquatic



Precious Metal



Rouge

# 8 Monomoy



Unlined Bed Blanket/Bubbles Cloud - 4-Corner Rest Dust Ruffle/Weaver Ebony  
Drapery/Monomoy Platinum - Sheer/Stonehenge Mushroom - Cornice/Weaver Ebony  
Bolster/Weaver Fernell with Weaver Ebony westing & button - Bed Scarf/Zenith Onyx with Zenith Lily Pad border

Platinum



Paprika



Amber



Espresso



Centered Scar/Sound Wave Brushfire – Drapery, Cornice & Roman Shade/Solar Stripe Steel – Throw Pillows/Galaxy Noir

Brushfire



Eggplant



Shadow



Peacock



Waterfall Bedspread  
Mahogany

Duvet with light insert/Thorndale Mahogany Inset with Oxygen Barley.  
Quilted Tailored (with pleats at corners only)  
Dust Ruffle/Oxygen Barley – Drapery/Oxygen Barley  
Roman Shades/Oxygen Barley with Oxygen Olive (center stripe)  
Tufted Throw Pillows/Oxygen Wine, Olive, Dusk, Barley, Willow & Aquamarine



Primary

Spring

Sunny

Fudge

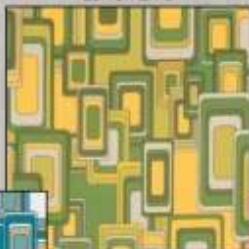


Unlined Bed Blanket/Linear White – Dust Ruffle/Sixties Sunburst  
 Flanged Pillow Shams/Sixties Sunburst – Corded Throw Pillows/Vertex Autumn Glow – Bed Scarf/Courier Arabesque

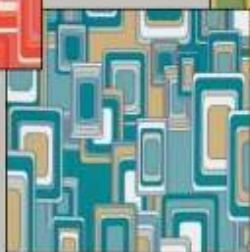
Sunburst



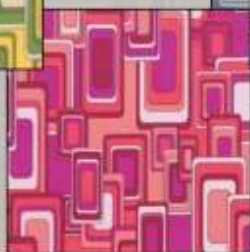
Lemon Lime



Steel



Tidewater



Flamingo

# Natick

(featured in the LEAFAGE room setting)



# Zephyr

(featured in the WINTER TREE room setting)



# Environment Plus

## Responsible Choices, Stylish Fabrics

Pattern Oxygen uses revolutionary AirDye® technology as the method of applying color to the fabric. Here's why it matters:

Conventional dyeing uses polluting chemicals and consumes a huge amount of precious water. In fact, coloring fabric can use from 56 to 600 times the weight of the fabric in water. Dyeing of synthetic textiles alone consumes 2.4 trillion gallons of water a year. Often chemicals from this water end up in our world's lakes, rivers and oceans. Add to that the enormous amount of energy used in traditional textile dyeing and it becomes easy to see why finding an alternative is vital to the health of our planet.

Pioneered by Colorex®, AirDye® technology is today's revolutionary alternative to traditional dyeing. AirDye® technology manages the application of color to textiles *without the use of water and at a greatly reduced consumption of energy*. The result is luxuriously brilliant color and a world-changing positive impact on our planet's energy and water shortage.

## Oxygen



Dawn



Sand



Buckskin



Barley



Wheat



Gold



Caramel



Amber



Clay



Olive



Bark



Chocolate



Willow



Moss



Grass



Jade



Hunter



Granite



Aquamarine



Cinnamon



Scarlet



Wine



Eggplant



Dusk



Heather



Navy



# CREATIVE DRAPERIES, INC.



## SCHEME JUMERIAH

TOP OF BED:	Jumeriah – Saga Palm (Backing: Galaxy – Sage)
BED SKIRT:	Applicator – Chocolate Chip
BED SCARF:	Milan Square – Thyme
FRONT PILLOW:	Applicator – Chocolate Chip
BACK PILLOW:	Milan Square – Thyme
DRAPE:	Heather – Celery
SHEER:	Whisper Batiste – Marble
TOP TREATMENT:	Applicator – Chocolate Chip

## SCHEME BOUTIQUE

TOP OF BED:	Boutique – Louboutin (Backing: Galaxy – Fiery Brown)
BED SKIRT:	Euphoria – Blonde
BED SCARF:	Milan Square – Cherry
DECORATIVE PILLOW:	Milan Square – Cherry
DRAPE:	Euphoria – Blonde
SHEER:	Whisper Batiste – Marble
TOP TREATMENT:	Boutique – Louboutin



## SCHEME HENDRICKS

TOP OF BED:	Hendricks – Flame (Backing: Galaxy – Dijon)
BED SKIRT:	Applicator – Chocolate Chip
BED SCARF:	Milan Square – Chocolate Delight
FRONT PILLOW:	Milan Square – Chocolate Delight
BACK PILLOW:	Hendricks – Flame
DRAPE:	Applicator – Chocolate Chip
SHEER:	Whisper Batiste – Marble
TOP TREATMENT:	Jimie – Flame



CHECK OUT OUR WEBSITE FOR MORE DESIGN SCHEMES AND FABRICS  
[WWW.CREATIVEDRAPERIES.COM](http://WWW.CREATIVEDRAPERIES.COM)



## SCHEME RELAY

TOP OF BED:	Relay - White (Backing: Serenity - White)
BED SKIRT:	Applicator - Caviar
BED SCARF:	Mountain View - Black
DECORATIVE PILLOW:	Mountain View - Black
DRAPE:	Koi - Ming Red
SHEER:	Whisper Batiste - Marble
TOP TREATMENT:	Applicator - Caviar

Relay Pattern



## SCHEME ARTURO

TOP OF BED:	Arturo - Robins Egg (Backing: Galaxy - Ecu)
BED SKIRT:	Applicator - Back Drop
BED SCARF:	Mountain View - Grey
DECORATIVE PILLOW:	Mountain View - Grey
DRAPE:	Applicator - Back Drop
SHEER:	Amsterdam Stripe
TOP TREATMENT:	Gavin - Robins Egg



## SCHEME YINGLING

TOP OF BED:	Yingling - Neutral (Backing: Galaxy - Dijan)
BED SKIRT:	Applicator - Neutral
BED SCARF:	Applicator - Pennywise
DECORATIVE PILLOW:	Applicator - Neutral
DRAPE:	Benchmark Stripe - Neutral
SHEER:	Whisper Batiste - Marble
TOP TREATMENT:	Applicator - Pennywise



### OTHER COLORS AVAILABLE

PATTERN  
MILAN SQUARE



PATTERN  
MOUNTAIN VIEW



CREATIVE DRAPERIES, INC.

*Solids*



WAVERUNNER 118" / CHECKERS 126"

## BUBBLES 118" / LINEAR 126"



Unquilted, Self-Lined Bed Blanket/Bubbles White • Unlined Bed Blanket/Bubbles Chocolate  
Flanged Pillow Shams/Linear Leaf • Bolster Pillow/Linear Chocolate • Drapery/Bubbles Chocolate  
T-I Cornice Board/Bubbles Chocolate • Tailored Dust Ruffle/Linear Leaf  
Bed Scarf/Rhapsody Eucalyptus

*Check out our fabric selections!*  
[www.creativedraperies.com](http://www.creativedraperies.com)

## SWIRLING 118" / SQUARE DEAL 118"



Unlined Bed Blanket/Swirling Gold • Tailored Pillow Shams/Square Deal Gold  
Pillow Case Shams/Velocity Spice • Bolster Pillow/Staple Stripe Paprika  
4-Corner Pleat Dust Ruffle/Staple Stripe Paprika • Sheer/Chaffin Ginger

*Select Coordinating Drapery Fabrics Online*

*[www.creativedraperies.com](http://www.creativedraperies.com)*



White



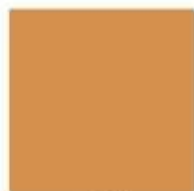
Beige



Straw



Maya



Gold



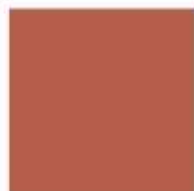
Cloud



Taupe



Chocolate



Cayenne



Spice



Maroon



Leaf



Willow



Surf



Jade



Turquoise



Navy

All patterns are available in all colors featured.

This collection offers a wide selection of washable, wide-width 100% Flame Retardant Polyester Jacquard and Dobby patterns. All six patterns are available in 17 fresh mix-and-match colors. This new collection offers an abundance of style and texture, with a world of design choices, perfect for seamless bed and window coverings.

From fabrics to finished products, we are your one-stop resource for every project. Contact a customer service representative for more information or to request samples and/or quotes.

*Spice up your solids with a dazzling fabric design!*

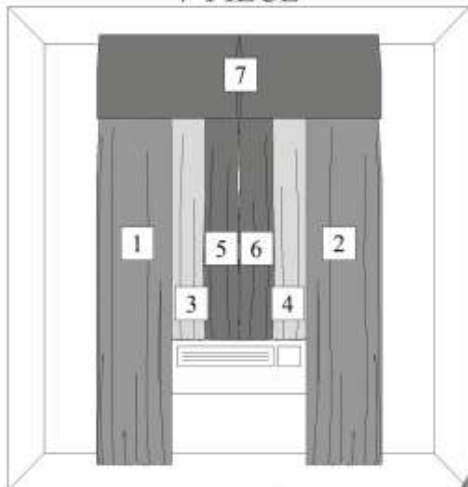
*Visit us online [www.creativedraperies.com](http://www.creativedraperies.com)*

*Call us 1-800-941-1132*

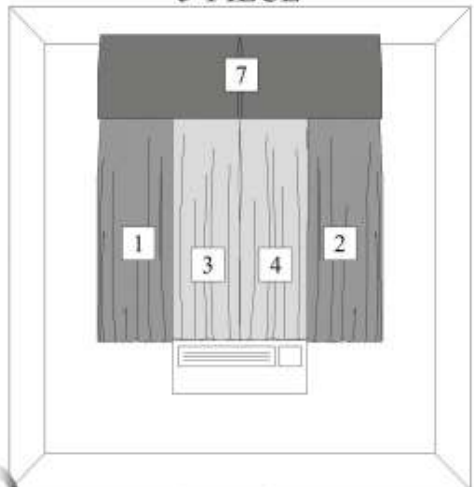
COVER: Duvet w/Light Insert/Waverunner Cloud • Box Quilted Pillow Shams/Checkers Spice • Flanged Pillow Shams/Waverunner Spice  
Throw Pillow/Character Pottery • Double Inverted Dust Ruffle/Checkers Spice • Drapery/Checkers Spice • Sheer/Batiste White • Bed Scarf/Character Pottery

# WINDOW CONFIGURATIONS

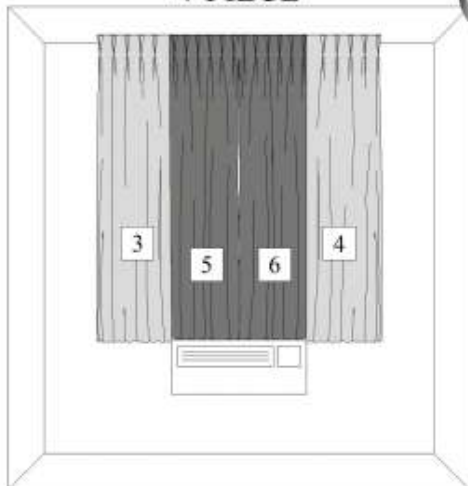
7-PIECE



5-PIECE



4-PIECE



2-PIECE



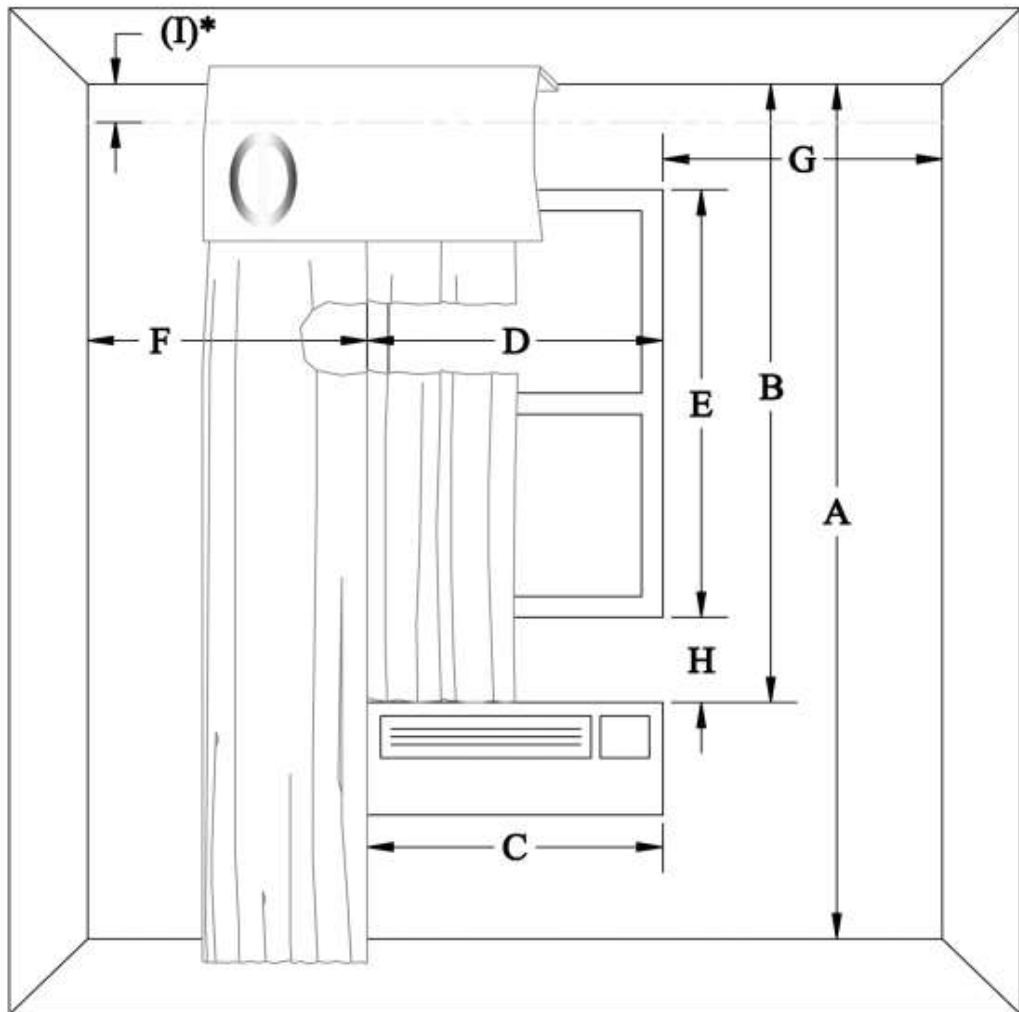
## DRAPERY COMPONENTS

1. DRAPE
2. DRAPE
3. SHEER
4. SHEER
5. BLACKOUT
6. BLACKOUT
7. VALANCE

## WINDOW CONFIGURATIONS

CONFIGURATION	QTY
7-PIECE	
5-PIECE	
4-PIECE	
2-PIECE	

# WINDOW MEASUREMENTS



## MEASUREMENTS (IN INCHES)

A. CEILING TO FLOOR	"
B. CEILING TO TOP OF PTAC	"
C. PTAC WIDTH	"
D. WINDOW WIDTH	"
E. WINDOW HEIGHT	"
F. LEFT WINDOW EDGE TO LEFT WALL	"
G. RIGHT WINDOW EDGE TO RIGHT WALL	"
H. BOTTOM OF WINDOW TO TOP OF PTAC	"
*I. CEILING TO DESIRED WALL MOUNT POSITION	"

## FABRIC SPECIFICATIONS

1. QTY	
2. PATTERN	
3. COLOR	
4. STYLE	
5. LINED	
6. PAIR/ PANEL	

\* Dimension needed only if the valance is to be wall mounted (not recommended if measurement "A" [CEILING TO FLOOR] is 96" or less).

# FACTORY DIRECT

VISIT US ONLINE FOR MORE FABRICS AND HOTEL SCHEMES

This season's print collection features the new "TO" base cloth, which is a 100% Polyester flame retardant oxford cloth with a wonderful cotton-like hand. This multi-purpose cloth is perfectly suited for drapery, bedding and upholstery uses.

From fabrics to finished products, including all of the items featured in this brochure and much more, we are your one-stop resource for every project. With our commitment to quality products and extraordinary service, We continue to be the gold standard in textile safety, quality and design.

Contact a customer service representative for more information or to request samples and/or quotes.

## Creative Draperies, Inc.

*Proudly Serving the Hospitality Industry Since 1968*

Easy Online Ordering • RELIABLE SERVICE • QUALITY PRODUCTS

[www.creativedraperies.com](http://www.creativedraperies.com)

